

Mink

Mink MI 1502 BV/BP



MI 1502 BV

Description

The Busch Mink MI 1502 is a single-stage, dry rotary claw-type, positive displacement pump designed for either pressure or vacuum applications.

Vacuum or pressure is produced by two non-contacting rotors in an oil-free pumping chamber. The dry, non-contacting design makes the Mink ideal for

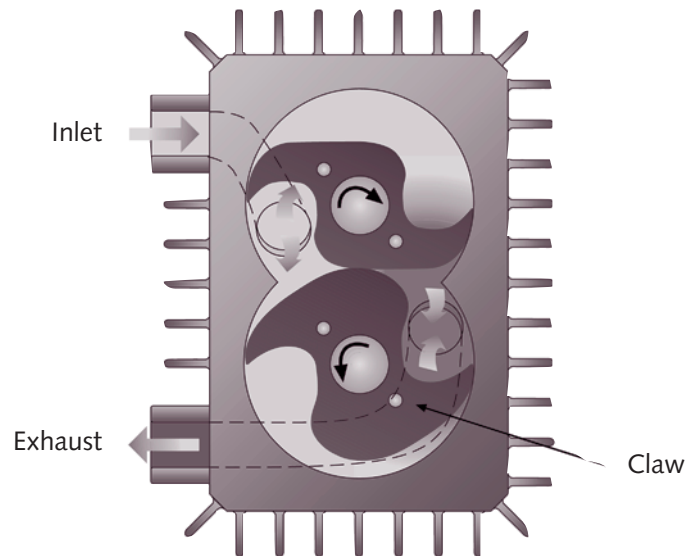
pneumatic conveying, printing, soil remediation, and any application where dust particles may be present. Wearing parts are separated from the pumping chamber which leads to a longer pump life with low maintenance.

Features

- Non-contacting design
- Dry (oil-free) pumping chamber
- Air-cooled
- Low maintenance – no wear in pumping chamber
- Simple, modular construction
- Suitable for variable speed applications
- Discharge silencer on vacuum model; inlet silencer on pressure model
- Frame rails
- Suitable for dusty environments
- Integral relief valve
- Inlet filter on pressure model

Dry Rotary Claw Pressure or Vacuum Pumps

Operating Principle



Operating Principle

Inside the pump housing, two claw shaped rotors take in air as they rotate in opposite directions. The air is compressed by the rotors, then discharged through a silencer to atmosphere. The non-return valve incorporated into the inlet flange prevents air from back flowing into the pumping

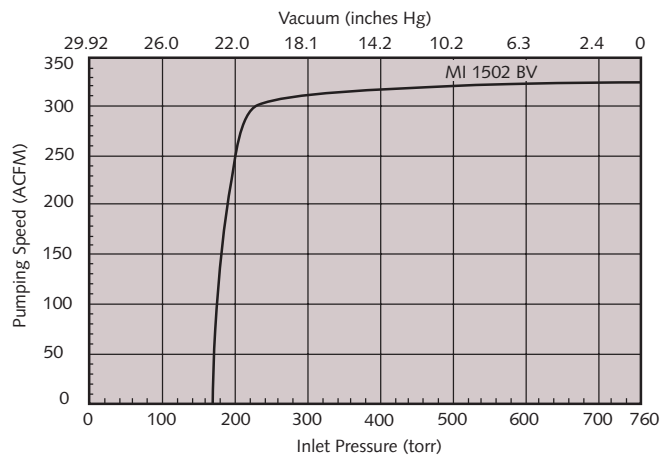
chamber when the pump is turned off. Mink MI dry rotary claw direct drive pumps are driven by a C-face motor, and the two rotors are synchronized by gears. A wide range of accessories allows optimum adaptation to many applications.

Applications

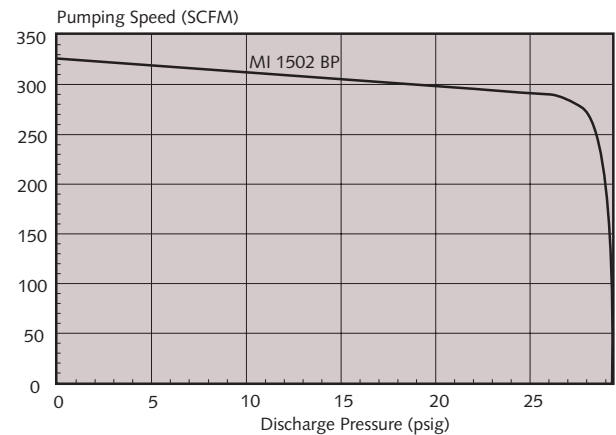
- Wood Industry
- Pneumatic conveying
- Transport and lifting systems
- Medical technology
- Central vacuum systems
- Packaging industry
- Plastics industry
- Food industry
- Printing industry
- Ceramics and brick industry
- Environmental technology
- Vacuum sewage
- Textile industry
- Paper industry
- Beverage industry

Technical Data

Pumping Speed vs. Inlet Pressure



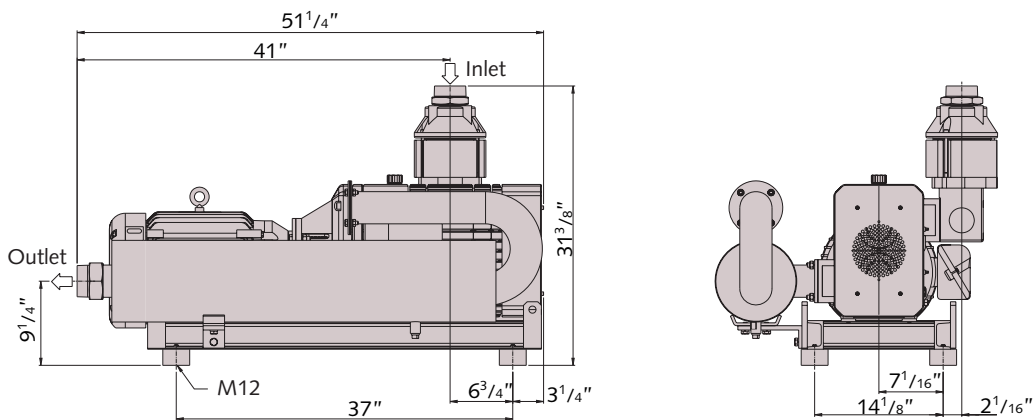
Pumping Speed vs. Discharge Pressure



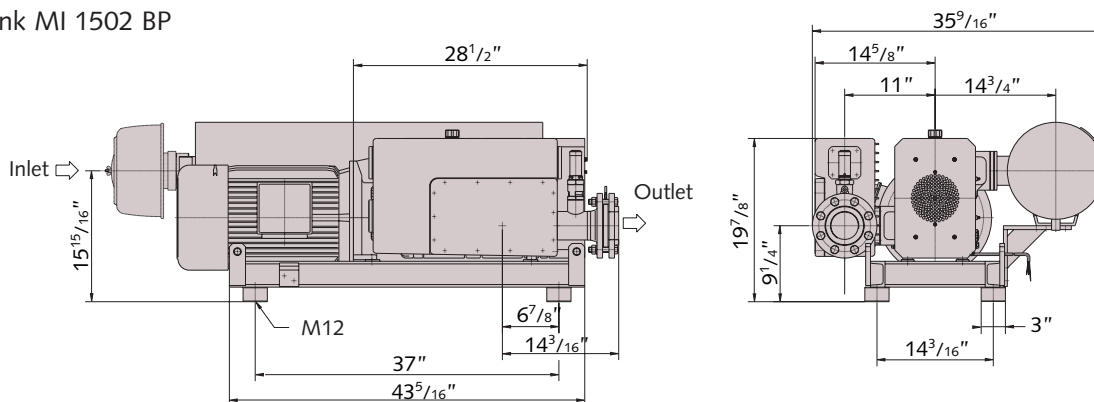
Technical Data		1502 BV	1502 BP
Model MI		1502 BV	1502 BP
Nominal pumping speed	ACFM	325	-
Nominal pumping speed	SCFM	-	325
Free air displacement	CFM	376	376
End vacuum	"Hg	23.4	-
End vacuum	torr	165	-
Maximum Pressure	psig	-	29.4
Motor rating	HP	15	40
Motor speed	RPM	3600	3600
Approx. weight	Lbs	950	1350
Inlet pipe connection	Inches	3	3
Discharge pipe connection	Inches	3	3
Sound rating	dBA	85	87

Dimensions

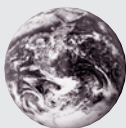
Mink MI 1502 BV



Mink MI 1502 BP



All dimensions in inches unless otherwise noted.



Busch - all over the world in industry

ISO 9001-2000 Registered Company

Busch, Inc. 516 Viking Drive Virginia Beach, VA 23452
 Phone (757) 463-7800 FAX (757) 463-7407

www.buschpump.com
 1-800-USA-PUMP